



State Transportation Board Meeting

September 17, 2020



- ☐ Roll Call
- ☐ Invocation
- ☐ Pledge of Allegiance
- ☐ Welcome Remarks
- ☐ Approval of Minutes



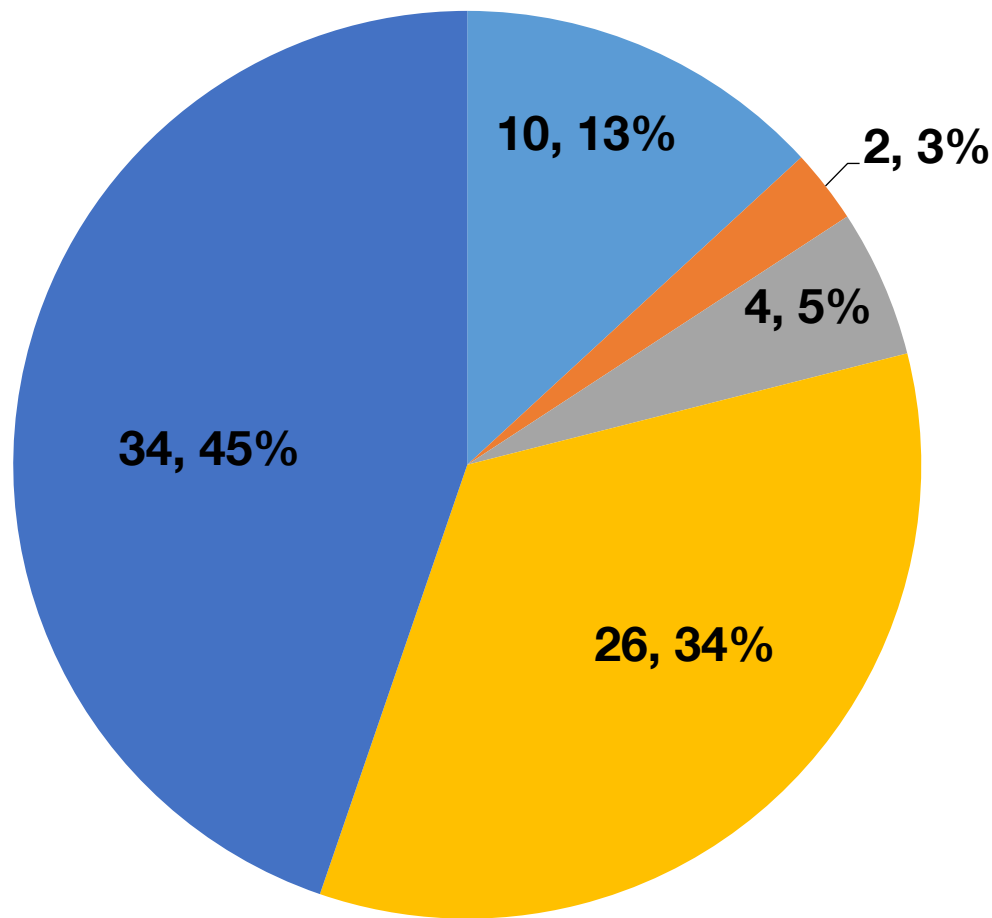


October 2020 Letting Report

Albert Shelby, Director of Program Delivery
September 17, 2020



Fiscal Year 2021 Letting Report Number of Projects Let in FY 2021 (Contractor Low Bid Award Data)



Total = 76

GDOT & Local Lets

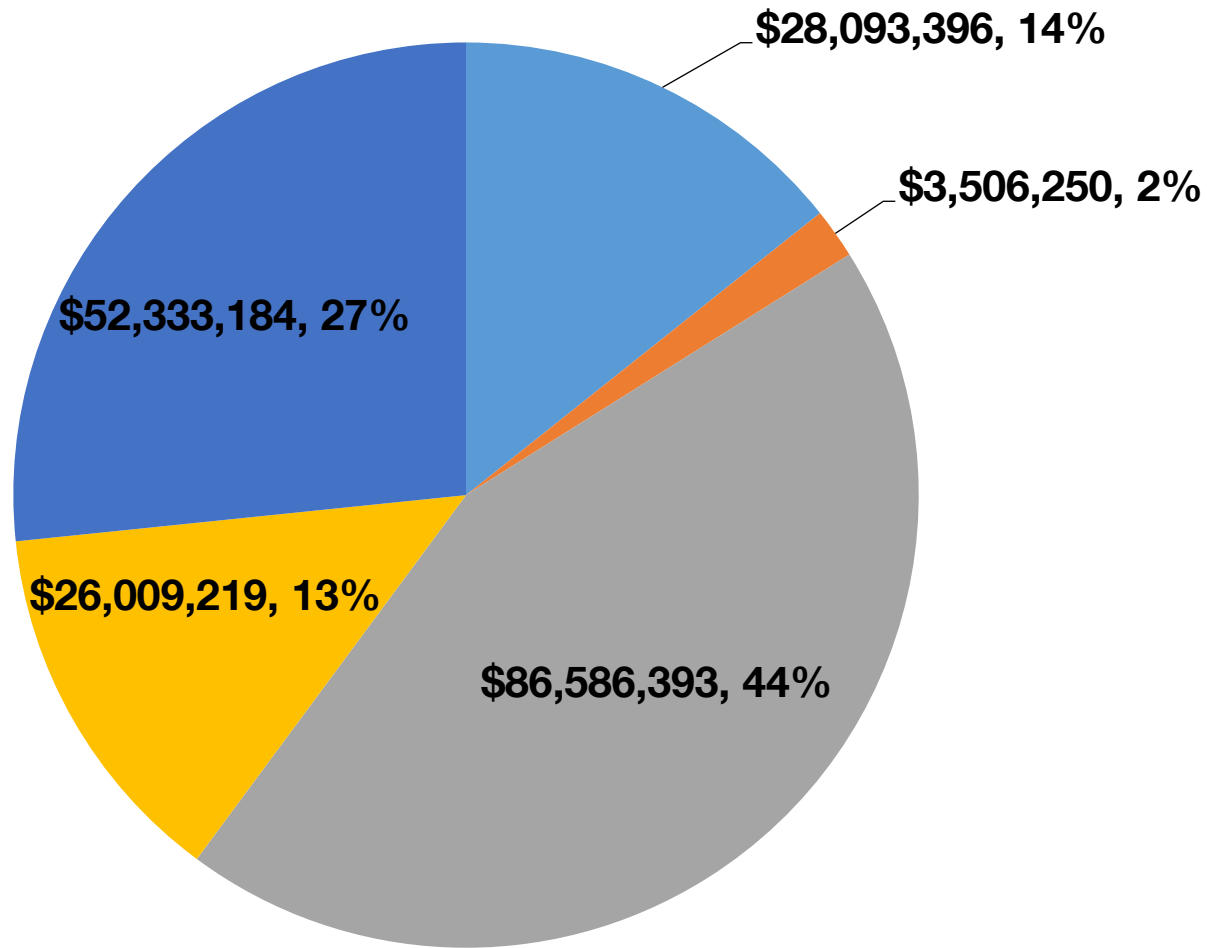
- Bridges
- Roads
- Enhancements
- Maintenance
- Safety

*As of September 3, 2020
Source Bidding Administration*

Fiscal Year 2021 Letting Report

Dollar Amount of Projects Let in FY 2021

(Contractor Low Bid Award Data)



Total = \$196,528,442

GDOT & Local Lets

- Roads
- Enhancements
- Maintenance
- Bridges
- Safety

As of September 3, 2020
Source Bidding Administration

August 2020 Letting Results

Summary	Presented to GDOT Board (Includes Adjustments)	Low Bid (Awarded to Contractor)	Low Bid w/Adjustments (Total Project Obligation)
GDOT Let (Project Count)	44	41	41
GDOT Let (Dollars)	\$119,367,483	\$108,509,958	\$112,724,906
Local Let	0	NA	NA

*Low Bid Award Amount includes the Deferred and Awarded projects.
Does not include Engineering and Inspection, Utilities, Liquid AC, Incentives, LMIG and Rejected projects.

As of September 3, 2020
Source Bidding Administration

GDOT and Local Let Projects

October 2020 Letting

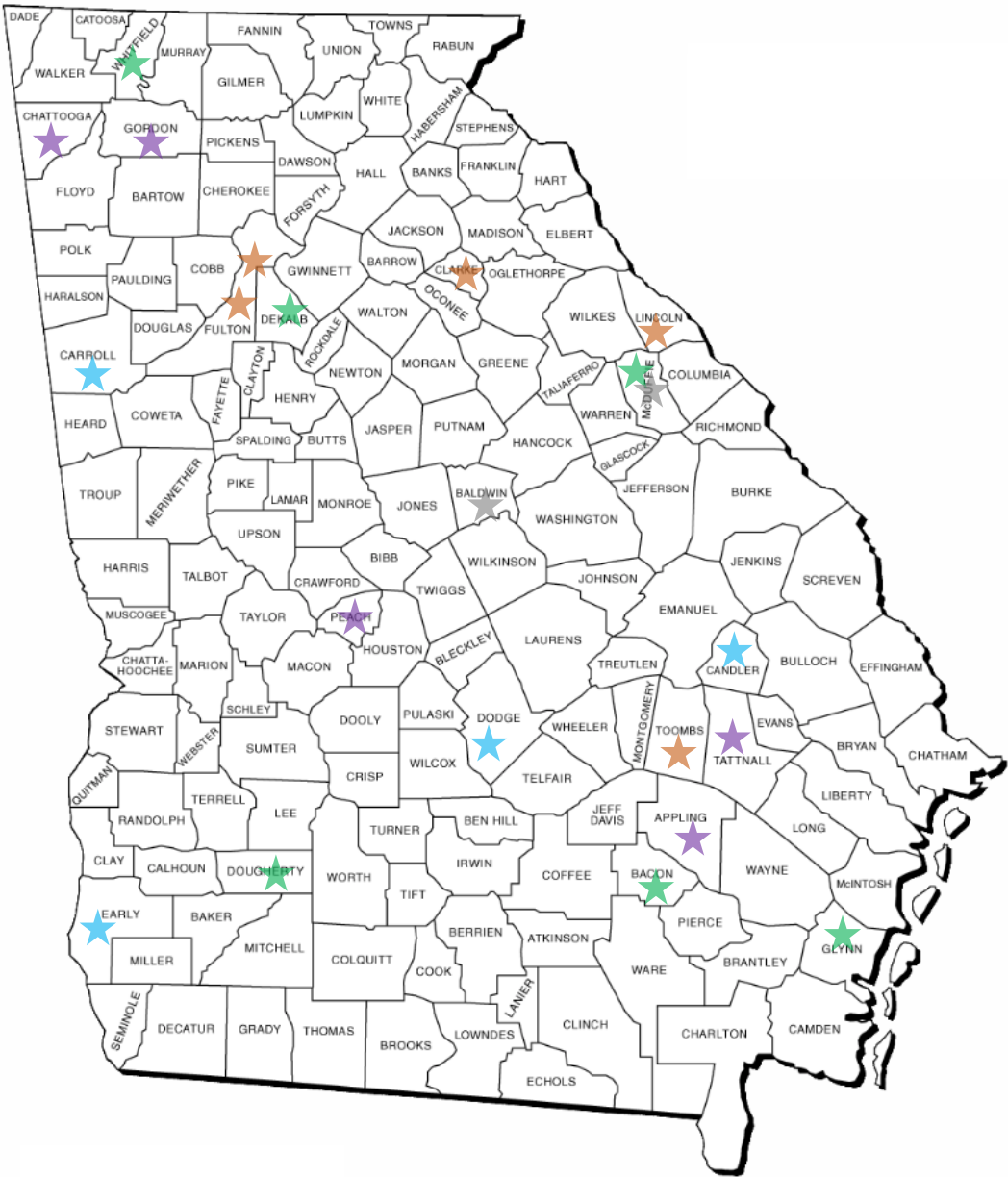
GDOT and Local Let Projects October 2020 Letting

Project ID	Description	Primary County	Primary Work Type	Congressional District	Project Let By	Project Sponsor
M005921	SR 25/US 17 FROM E OF SR 303 TO SIDNEY LANIER BRIDGE	Glynn	Resurface & Maintenance	001	DOT	GDOT
M005926	SR 32 FROM BRANTLEY COUNTY LINE TO SR 27	Glynn	Resurface & Maintenance	001	DOT	GDOT
0015668	I-75 @ SR 49 - LIGHTING	Peach	Lighting	002	DOT	GDOT
0016413	CR 279/DAMASCUS HILTON ROAD @ SOWHATCHEE CREEK	Early	Bridges	002	DOT	GDOT
0016417	CR 280/FIRST KOLOMOKI ROAD @ LITTLE KOLOMOKI CREEK	Early	Bridges	002	DOT	GDOT
M005980	SR 62 & SR 91 FROM 0.10 MI S OF SR 62 TO SR 234	Dougherty	Resurface & Maintenance	002	DOT	GDOT
0013936	SR 100 @ TURKEY CREEK 2 MI N OF BOWDON	Carroll	Bridges	003	DOT	GDOT
0017091	RUMBLE STRIPS IN DISTRICT 6 - AREA 3 @ 12 ROUTES	Carroll	Rumble Strips	003, 014	DOT	GDOT
721780-	SR 9 FROM ACADEMY STREET TO WINDWARD PKWY	Fulton	Widening	006	DOT	GDOT
721790-	SR 9 FROM UPPER HEMBREE ROAD TO ACADEMY STREET	Fulton	Roadway Project	006	DOT	GDOT
M005992	SR 13 FROM CS 757/CHAMBLEE TUCKER RD TO GWINNETT COUNTY LINE	DeKalb	Resurface & Maintenance	006	DOT	GDOT

GDOT and Local Let Projects October 2020 Letting

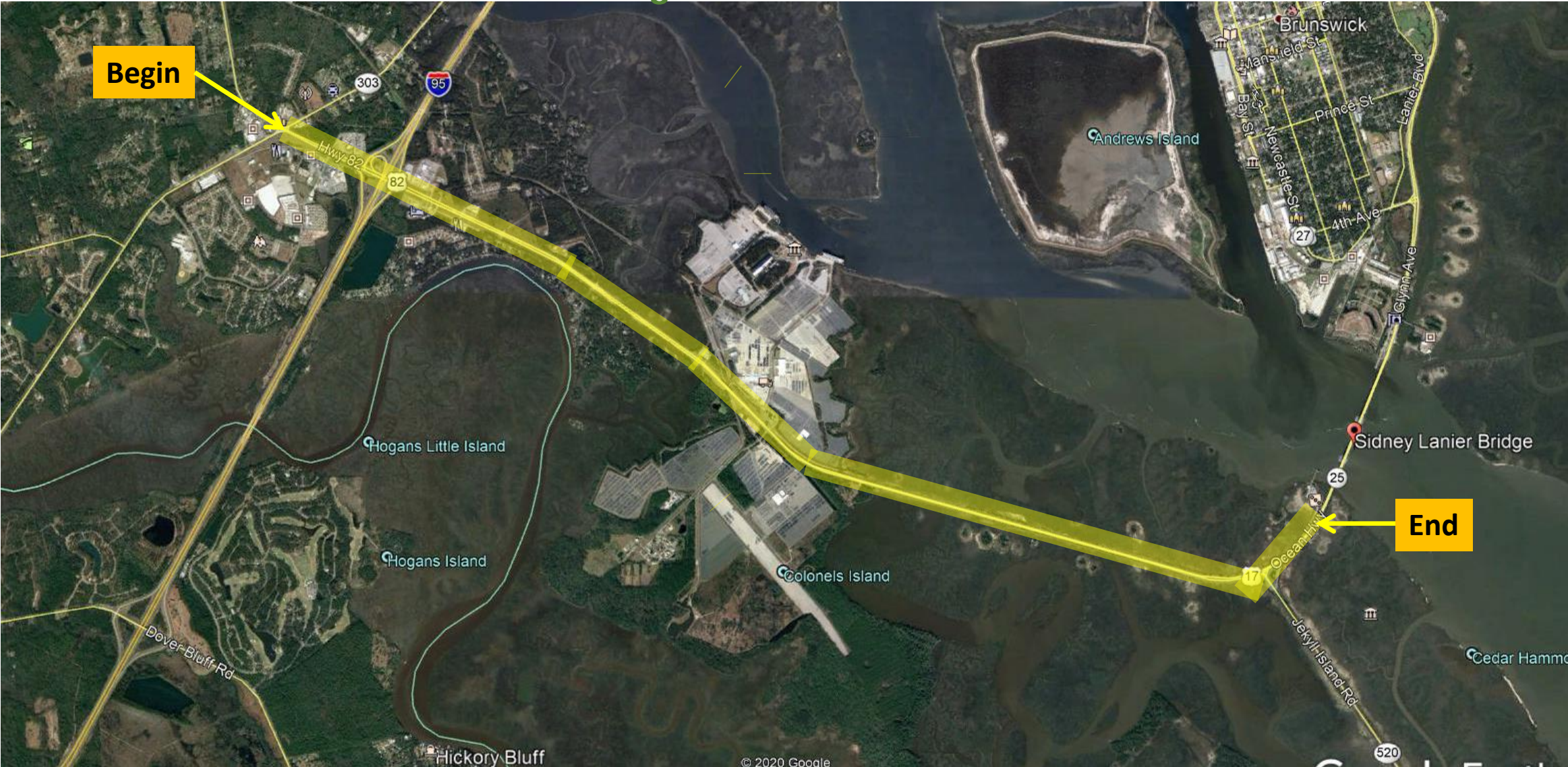
Project ID	Description	Primary County	Primary Work Type	Congressional District	Project Let By	Project Sponsor
0013823	SR 165 @ SUGAR CREEK 1 MI SW OF CHAUNCEY	Dodge	Bridges	008	DOT	GDOT
0013824	SR 230 @ BIG BRANCH 8.3 MI NW OF RHINE	Dodge	Bridges	008	DOT	GDOT
0017089	RUMBLE STRIPS IN DISTRICT 6 - AREA 1 @ 7 ROUTES	Gordon	Rumble Strips	009, 011, 014	DOT	GDOT
0017090	RUMBLE STRIPS IN DISTRICT 6 - AREA 2 @ 13 ROUTES	Appling	Rumble Strips	009, 014	DOT	GDOT
0010712	OCONEE RIVER GREENWAY & RIVERWALK @ FISHING CREEK - PH III	Baldwin	TE-Bike/Ped Facility	010	LOC	Oconee River Greenway Authority
122600-	SR 10 LOOP/ATHENS PERIMETER @ SR 10/US 78/LEXINGTON RD	Clarke	Interchange	010	DOT	GDOT
M005969	SR 17 FROM SR 12/US 278 TO N OF CS 788/HARRISON ROAD	McDuffie	Resurface & Maintenance	010	DOT	GDOT
0009880	SR 23/US 25/US 301 @ SR 196	Tattnall	Roundabout	012	DOT	GDOT
0016652	CR 49/EXCELSIOR CHURCH ROAD @ TEN MILE CREEK	Candler	Bridges	012	DOT	GDOT
522180-	SR 4/US 1 FM S OF GEORGE HILL RD TO SR 29;INC OPEN CRK - TIA	Toombs	Widening	012	DOT	GDOT
0017092	RUMBLE STRIPS IN DISTRICT 6 - AREA 4 @ 14 ROUTES	Chattooga	Rumble Strips	014	DOT	GDOT
M006077	SR 3/US 41 @ CS 874/CORONET DR & NS #904117G - BRIDGE REHAB	Whitfield	Bridges	014	DOT	GDOT

October 2020 Projects Throughout Georgia



- ★ Bridges
- ★ Roads
- ★ Enhancements
- ★ Maintenance
- ★ Safety

SR 25/US 17 FROM E OF SR 303 TO SIDNEY LANIER BRIDGE
Resurfacing Project in Glynn County
Congressional District 1



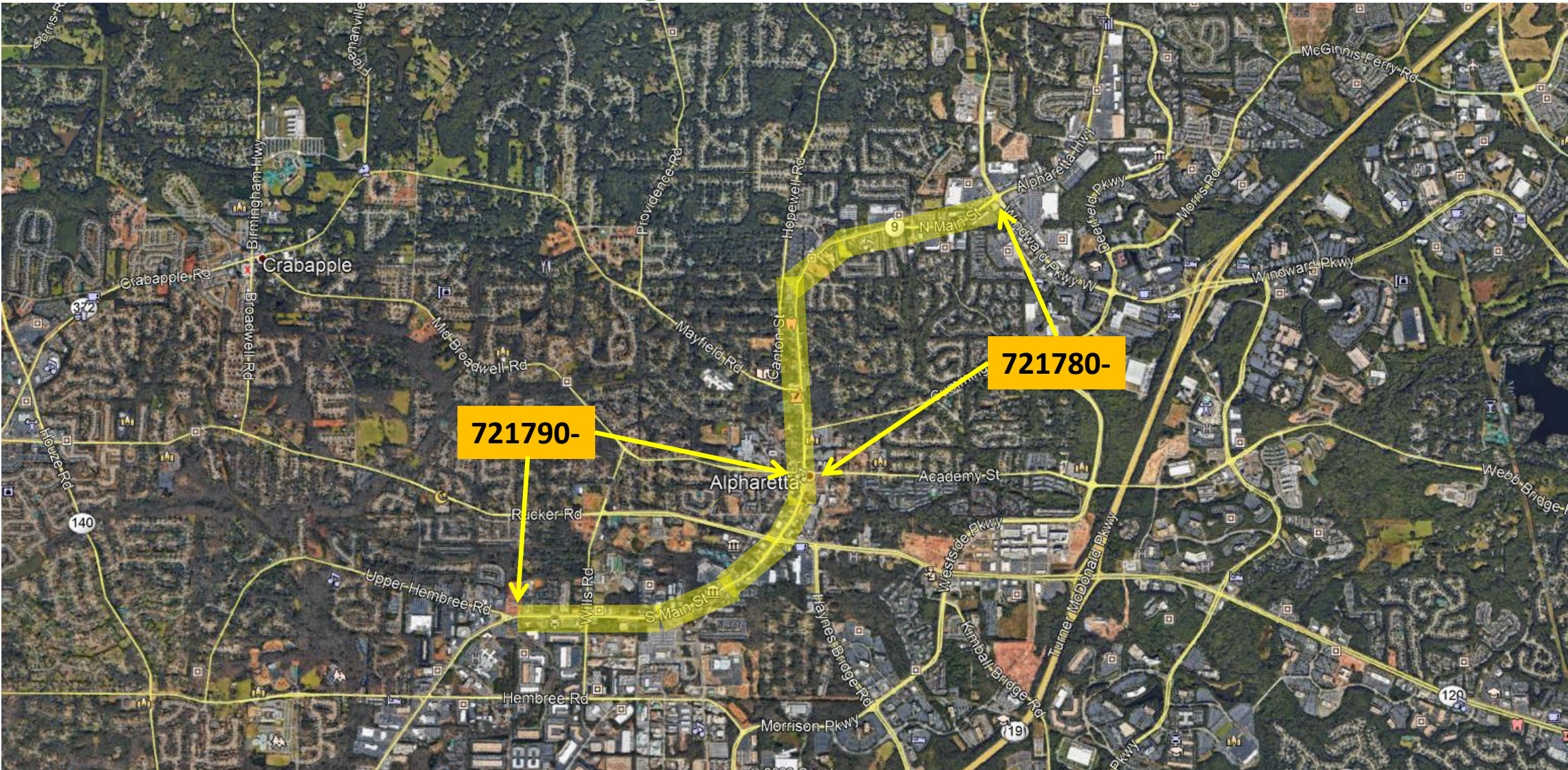
SR 100 @ TURKEY CREEK 2 MI N OF BOWDON
Bridge Replacement Project in Carroll County
Congressional District 3



SR 100 @ TURKEY CREEK 2 MI N OF BOWDON
Bridge Replacement Project in Carroll County
Congressional District 3 (Continued)



SR 9 FROM UPPER HEMBREE ROAD TO WINDWARD PKWY
Widening Project in Fulton County
Congressional District 6



SR 10 LOOP/ATHENS PERIMETER @ SR 10/US 78/LEXINGTON RD

Interchange Project in Clarke County

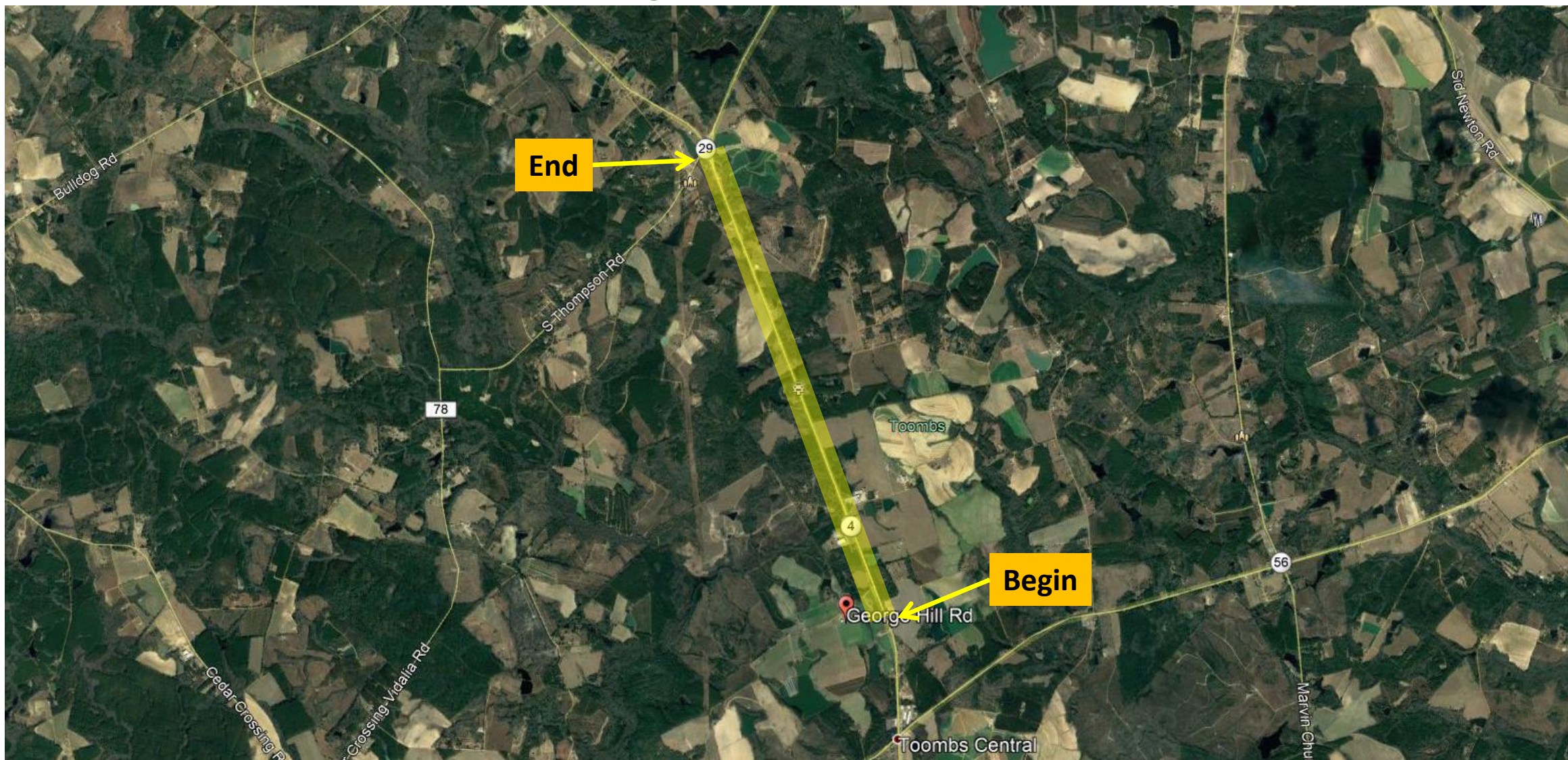
Congressional District 10



SR 4/US 1 FM S OF GEORGE HILL RD TO SR 29; INC OPEN CRK - TIA

Widening Project in Toombs County

Congressional District 12



SR 23/US 25/US 301 @ SR 196

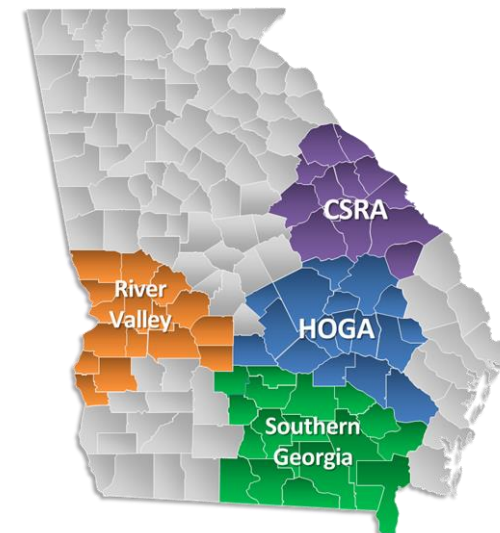
Roundabout Project in Tattnall County

Congressional District 12



GDOT Project Advertised only (not let) in October 2020

Project ID	Description	Primary County	Primary Work Type	Congressional District	Project Let By	Project Sponsor	Future Let Date
0017389	STATEWIDE ITS DYNAMIC MESSAGE SIGN (DMS) DEPLOYMENT - PH I	Multiple	ITS	Multiple	DOT	GDOT	December 2020



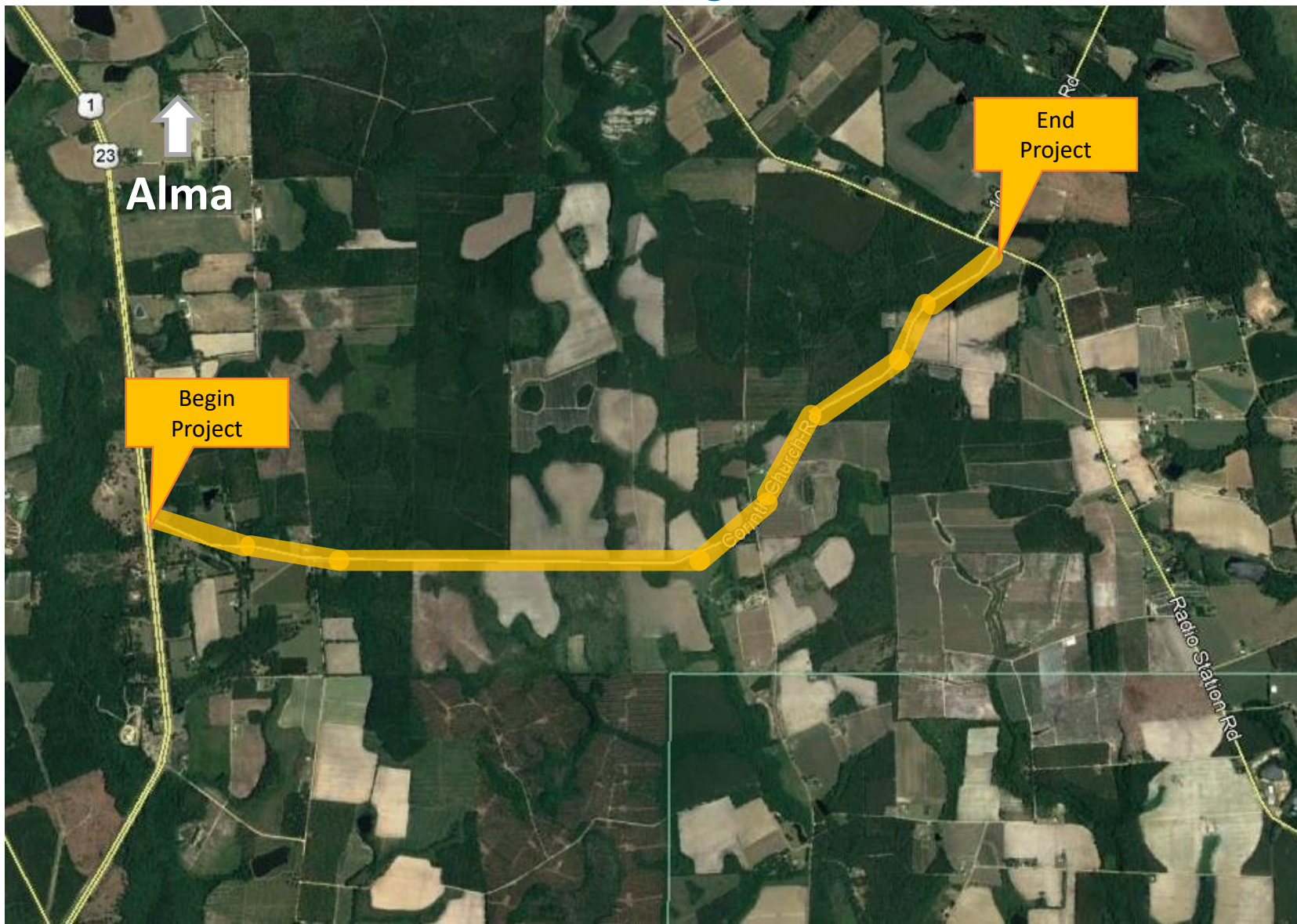
October 2020 Letting Proposed TIA Projects

September 17, 2020

TIA Projects October 2020 Letting

Project ID	Description	Primary County	Primary Work Type	Congressional District	Project Let By	TIA Region
0016183	CORINTH CHURCH RD FROM SR 4/US 1 TO RADIO STATION RD - TIA	Bacon	Resurfacing	001	DOT	Southern Georgia
0016184	CR 331/TEN MILE CHURCH RD FM RADIO STATION RD TO SR 203-TIA	Bacon	Resurfacing	001	DOT	Southern Georgia
0016185	CUMBERLAND RD FM SR 4/US 1 TO E OF FRIENDSHIP CHURCH RD-TIA	Bacon	Resurfacing	001	DOT	Southern Georgia
0011377	SR 43 FROM MCDUFFIE COUNTY LINE TO SR 220 - TIA	Lincoln	Minor Widening	010	DOT	Central Savannah River Area
0011378	SR 17 FROM SR 223 TO CS 788/HARRISON ROAD - TIA	McDuffie	Other Enhancements	010	DOT	Central Savannah River Area

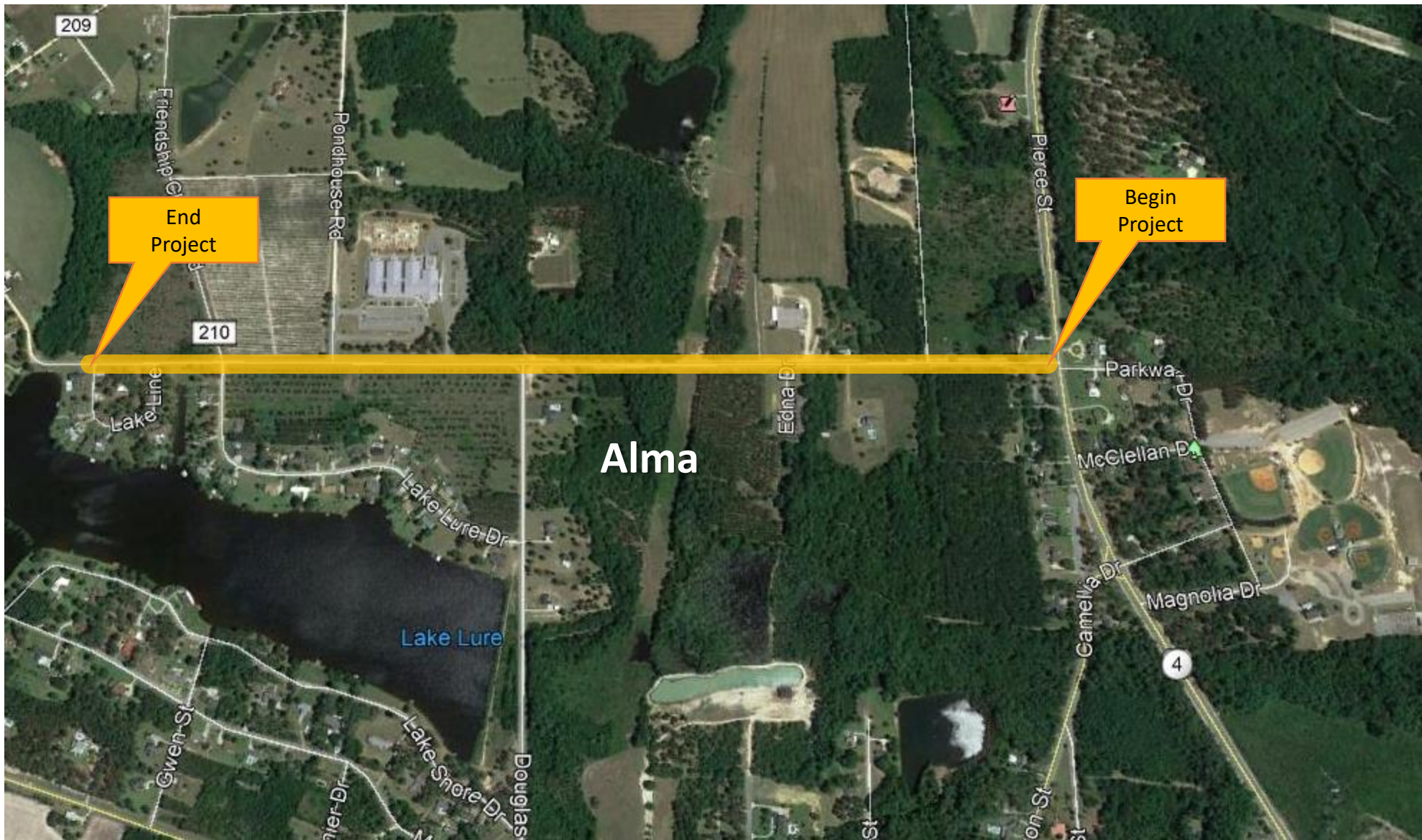
Corinth Church Road Resurfacing Bacon County / Congressional District 1



Ten Mile Church Road Resurfacing Bacon County / Congressional District 1



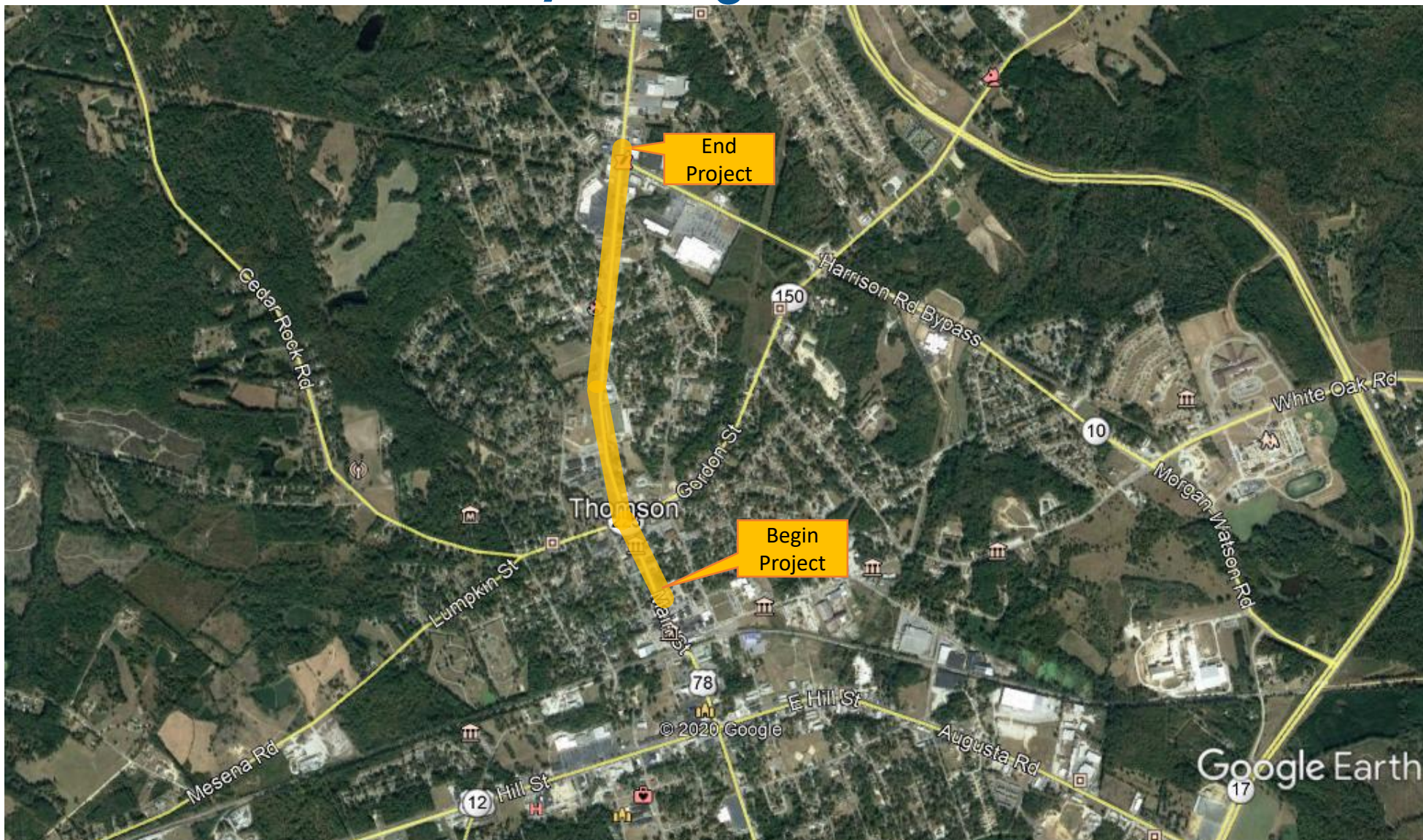
Cumberland Road Resurfacing Bacon County / Congressional District 1



SR 43 Passing Lanes Lincoln County / Congressional District 10

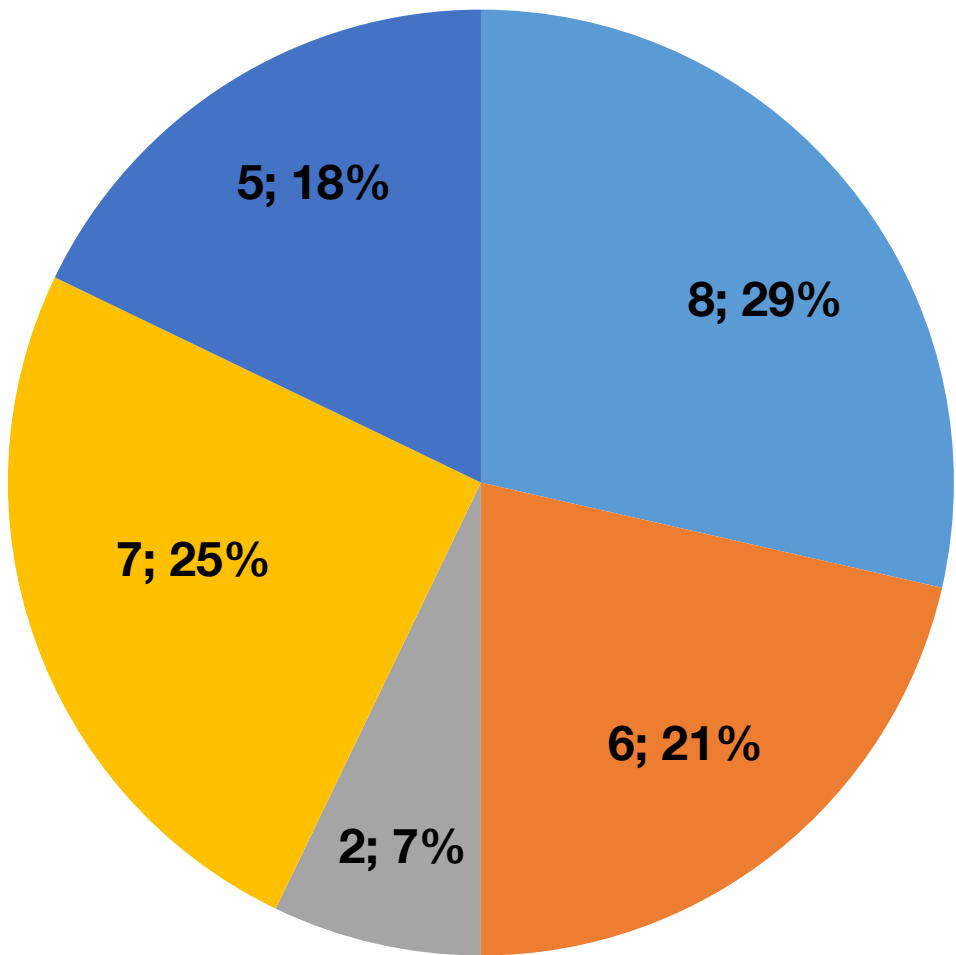


SR 17 Drainage Improvements McDuffie County / Congressional District 10



Fiscal Year 2021 Letting Report

Number of Projects
October 2020 Letting



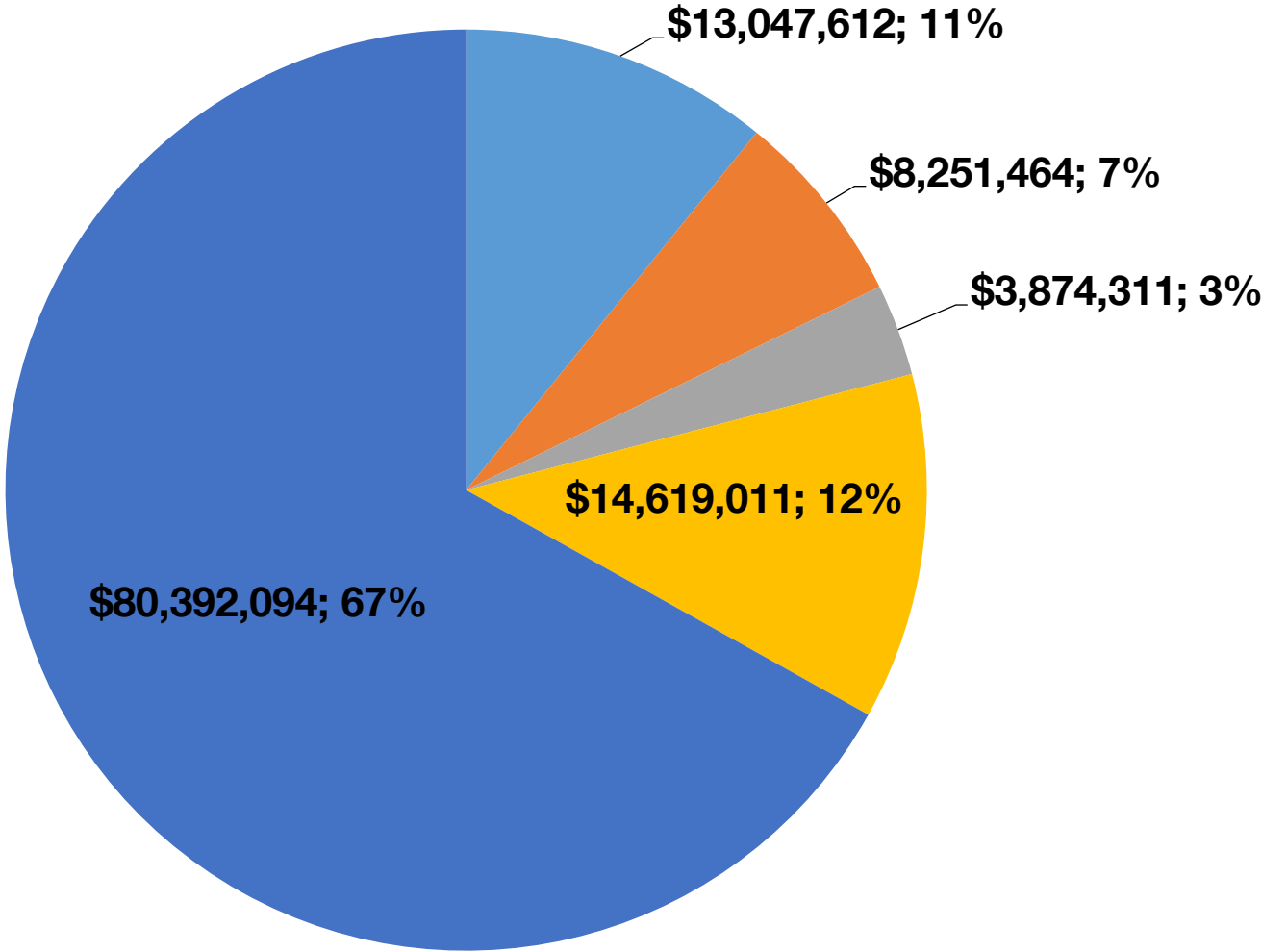
Total = 28

GDOT & Local Lets

- Maintenance
- Safety
- Enhancements
- Bridges
- Roads

Fiscal Year 2021 Letting Report

Dollar Amount of Projects
October 2020 Letting



GDOT & Local Lets

- Maintenance
- Safety
- Enhancements
- Bridges
- Roads

Total = \$120,184,492



Commissioner's Report to the State Transportation Board

September 17, 2020

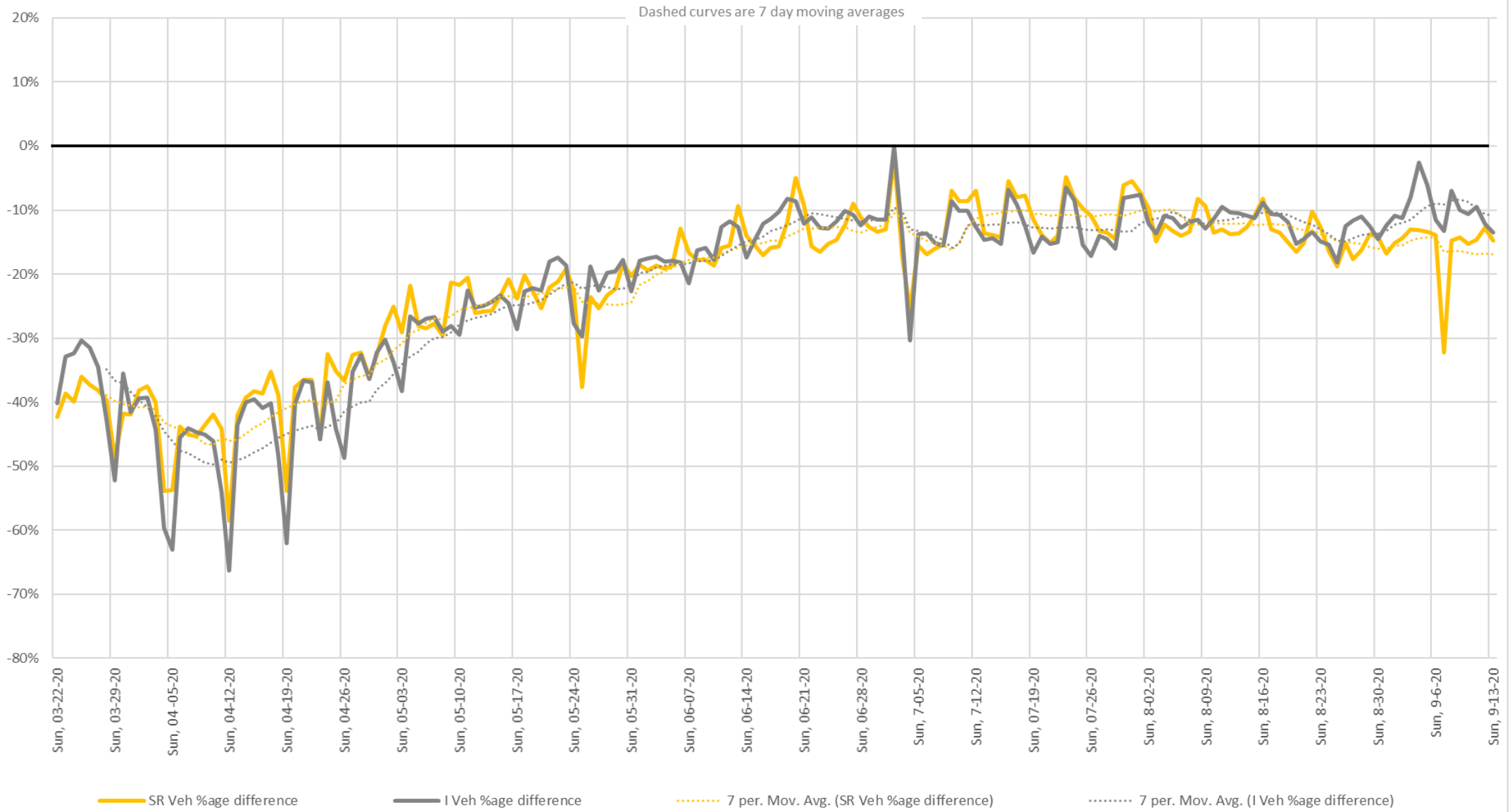
Commissioner's Update: August 2020

- ☐ Transportation Fund Collections
- ☐ Employment Data
- ☐ Professional Services Procurement Update
- ☐ Highlights of Projects Open to Traffic

Federal Transportation Reauthorization



Percentage Change in Traffic, March 22, 2020 to Present



Georgia Receives US DOT BUILD Grant to Widen SR 96



Georgia Awarded \$18.1M US DOT Infrastructure Grant for Airport Improvements



Meg Pirkle Named GSPE Government Engineer of the Year



Meg Pirkle Receives ARTBA Leadership Award



**2020 Ethel Birchland
Women in Leadership Award**

Carol Comer Receives NASAO Award



National Association of State Aviation Officials

Kenneth A. Rowe
Ambassador of Aviation Award

Communications Receives Highest Honor for Classroom Safety Curriculum



SCHOLASTIC

Sponsored Educational Materials

Teachers

- Teachers Home
- Lessons and Ideas
- Books and Authors
- Top Teaching Blog
- Teacher's Tool Kit
- Student Activities

The Teacher Store

Books Clubs

Book Fairs

Scholastic Education

Classroom Magazines

GDOT
Georgia Department of Transportation

RECOGNIZING THE RISK

ELA, Social Studies +
Math Unit on Distracted
Walking and Driving

SCHOLASTIC
Maskot **GRADES 6-8**

RESOURCES | CONTEST | SURVEY

Riverwalk Named a Contender for National People's Choice Award

← → ↻ ⚠ Not secure | dot.ga.gov 🔍 ☆ ⚙ S ➕

Apps GDOT EOCLinks My Benefits | Team... Publication Service... Sign in to Concur |... Time-Lapse Constr... Sites-Tourneau-Site GEMA/HS Dispatch... GDOT_DAAA_Board... Charlestown Bosto... »

GDOT
Georgia Department of Transportation

Home Board Employment Blog News Contact Us Site Map f t y i

Travelers Business & Government Projects Programs About GDOT

Search...

Visit www.dot.ga.gov and click on this banner to vote. Vote once every 24 hours!

Columbus Riverwalk
Vote for the 2020 People's Choice Award for nation's best transportation project

VOTE NOW

AMERICA'S
transportation awards

Columbus Riverwalk Contender for National People's Choice Award - Vote Now

Travel Info & Data ▾ Doing Business ▾ Building a Better Georgia ▾

GDOT Shares Volunteer Georgia Poll Worker Information with Employees



**SECURE
THE VOTE**

Georgia Poll Worker Recruitment Toolkit

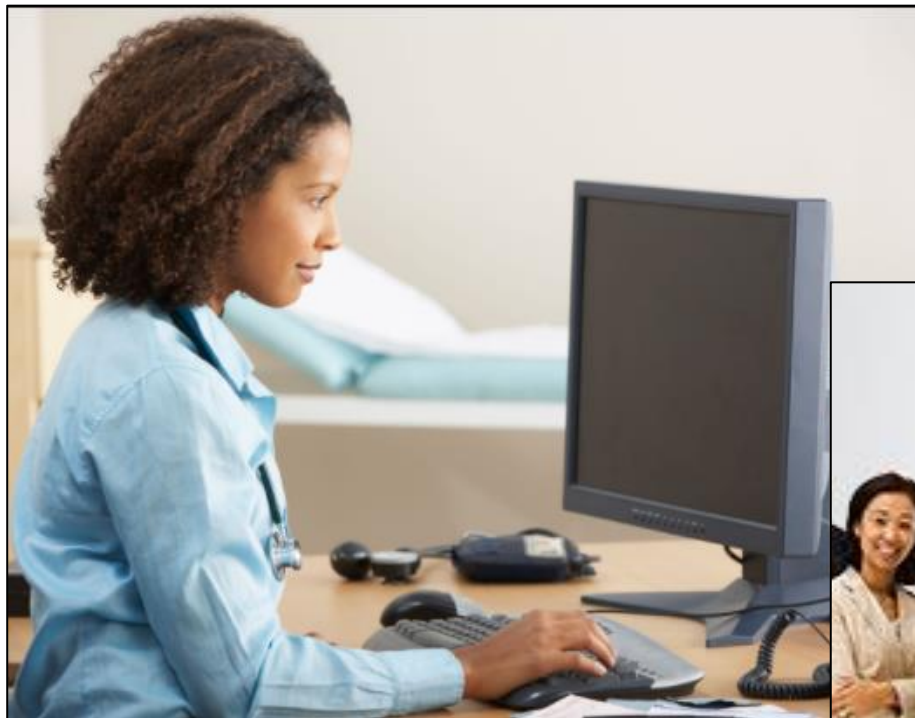
Poll Workers Are the Real Heroes of Elections!

You can be an **#GAElectionHero** by helping recruit poll workers from your civic group or organization to serve on Election Day, November 3, 2020. **With record-breaking turnout expected, counties need to recruit more poll workers than ever before!**

- Having enough poll workers helps to keep lines short at the polls and helps to ensure a positive experience for voters.
- You can help Georgia voters by sharing the [poll worker sign-up](#) information with members of your community through email, texting, social media, and printed posters and flyers.
- The sample outreach materials included in this toolkit will help to encourage your members to sign-up to be a potential poll worker at [securevote.ga.com/pollworker-signup/](#).
- For large groups seeking to serve together at a specific precinct, please contact your county election office directly [here](#).
- Please remind members to **list your organization** as below:

If you are seeking to serve...

Online Engagement Proves Beneficial in Increasing DBE Events Attendance



16@95 MMIP Projects Virtual Groundbreaking Video



GDOT Employee, Brother Rescue Stranded Couple



“... We really needed help ... a truck pulled up with two friendly brothers, Phillip and Trea Acorn ... they spent three hours in the rain getting us back on the road.”



I-285/I-20 East Interchange and I-285/I-20 West Interchange Project Update

Meg Pirkle, Chief Engineer
September 17, 2020



Triennial Goal Setting Process 2021-2023

Kimberly King, Director
Office of Equal Employment Opportunity
September 17, 2020

**The Disadvantaged Business
Enterprise (DBE) goal is
mandated by 49 CFR §26 for
federally assisted contracts**

Connecting with DBE Firms

Where are the Opportunities and How Do I Engage?

- **Review** projects for goal setting.
- **Communicate** the work activity to Supportive Services.
- **Notification** to DBEs from Supportive Services.
- **Information and Assistance** Provided by Supportive Services.
- **Engagement** in the Projects happen when DBEs find out the what, when, where and how of project participation activity.

Connecting with DBE Firms

Where are the Opportunities and How Do I Engage?

Our *Federally* funded Supportive Services consultant, CEI, has been active and intentional in its engagement with our DBEs during the COVID crisis, including the following:

- Live, virtual, interactive webinars have been ongoing;
- DBE Capability Statements;
- Financial Management;
- Start up and Growth Planning;
- Perfecting Your Pricing;
- Marketing and Sales; and
- Roundtable Sessions (DBEs talking with one another).

Connecting with DBE Firms

Where are the Opportunities and How Do I Engage?

Our *State* funded Supportive Services consultant, MH Miles, has been active and intentional in its engagement with our DBEs during the COVID crisis, including the following:

- Perform follow up regarding GDOT's Routine Maintenance Prequalification Committee;
- Small Business Development Center in Decatur has continued operations (virtual and via appointment); and
- Virtual seminars on DBE support and State funded opportunities continue throughout each district (*most recent one took place on 9/10 for District #2*).

What's the Benefit of DBE Certification?

Where are the Opportunities and How Do I Engage?

DBE firms are working on our federally funded & State funded projects, including the following:

- \$32,316,950 was awarded to DBE firms during the October to March reporting period;
- DBE firms are working on our MMIP projects, with \$61,557,215 awarded to DBE firms on our mega projects;
- \$6,144,412 was awarded to DBE firms on maintenance projects in FY 20;
- \$1,429,156 was awarded to DBE firms on rapid response projects in FY 20; and
- \$739,638 was awarded to DBE firms on quick response projects.
- **More than \$120 million** to DBEs on these project types.

DBE Participation & Success

Opportunities and Engagement

- DBE awards are happening on State and Federally Funded projects because DBEs are being sought out for engagement;
- Goals are being carefully assessed and attached to our projects, federal and state, where appropriate to make certain DBEs participate in the expenditure of our funds;
- How and why those goals are set is provided in an explanatory submission made every three years to the United States Department of Transportation (U.S. DOT); and
- That submission provides us an opportunity to demonstrate our goal setting methodology to U.S. DOT so that we have an approved overall Agency goal and can apply it to our project-specific activity monthly.

Methodology (Federal Formula)

STEP 1 - Base Figure -

$$\text{Step One Base Figure} = \frac{\text{Ready, willing, and able DBEs}}{\text{All firms ready, willing, and able (including DBEs and non-DBEs)}}$$

.....and then weighted based on anticipated category budget.

Step One:
Calculated Baseline
16.2%

STEP 2

- Adjustment -

Federal FY	DBE Awards
2017	16.3%
2018	18.2%
2019	12.2 %

Median Past Participation 16.3%

END RESULT

- Overall Calculated Goal -

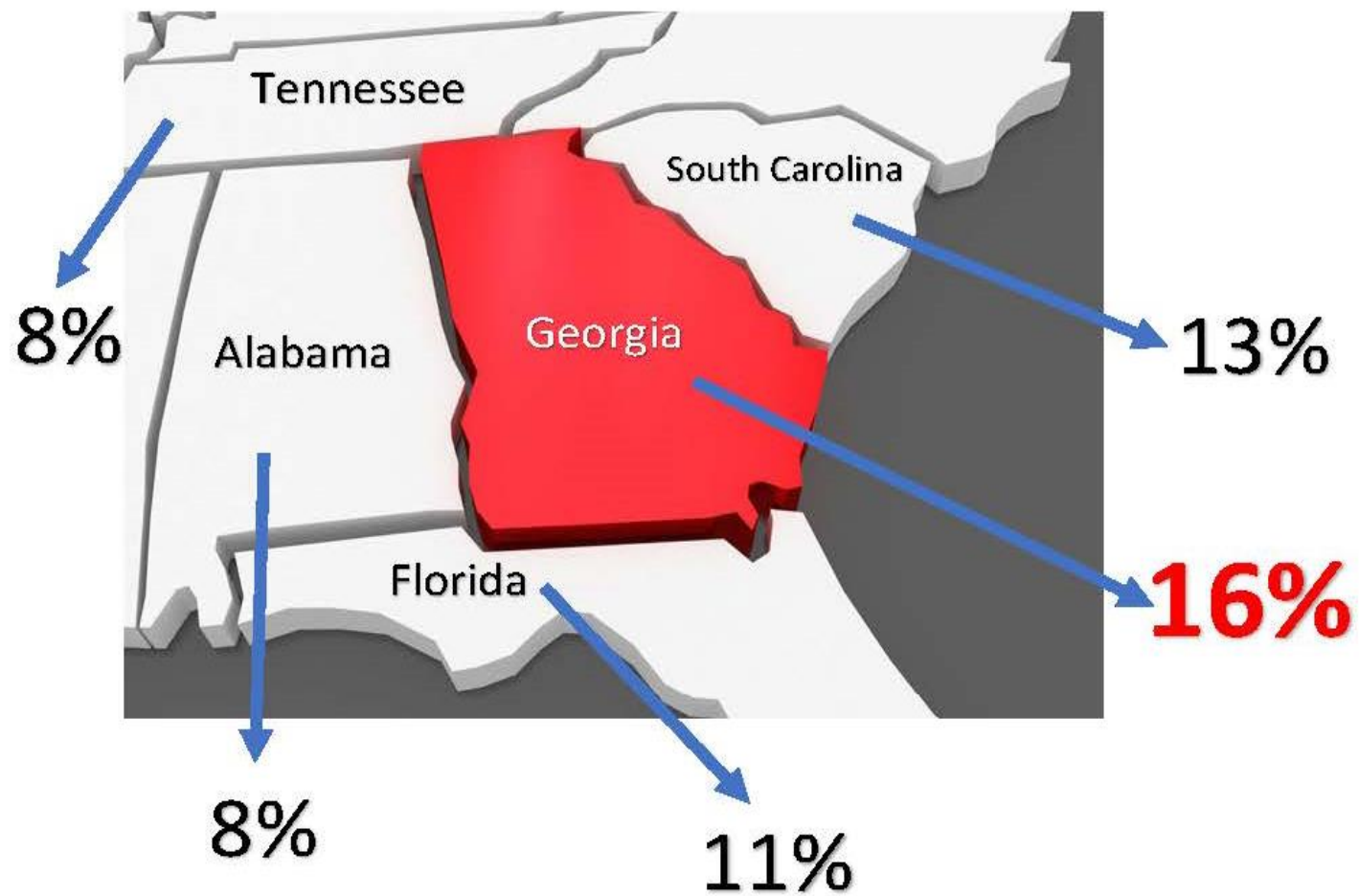
			MEDIAN
STEP 2: Median	2017	16.3	16.3%
	2018	18.2	
	2019	12.2	
Calculated Goal	(16.2 + 16.3) / 2		
	16.3%		

Sample - Project Specific Goal Setting

$$\left(0.65 \left(\frac{24 \text{ DBE asphalt paving firms}}{77 \text{ All asphalt paving firms}} \right) + 0.05 \left(\frac{17 \text{ DBE pavement marking firms}}{39 \text{ All pavement marking firms}} \right) \right) \times 100 =$$

Step One base figure
weighted by type of
work performed

Georgia Continues to Lead...



DBEs are Engaged at GDOT





Resolution

Honoring
Retiring GEMA/HS Director
Homer Bryson





- ☐ New Business
- ☐ Adjourn





State Transportation Board Meeting

September 17, 2020